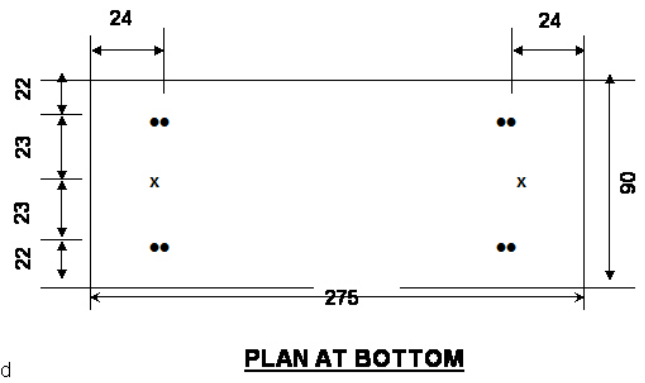
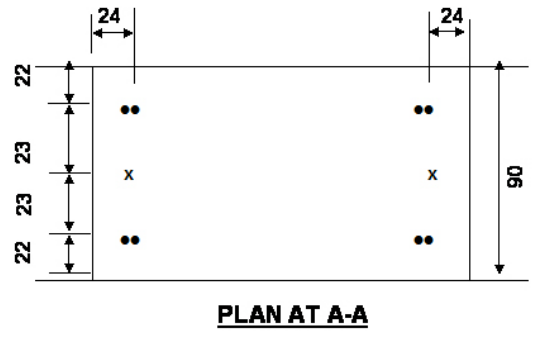
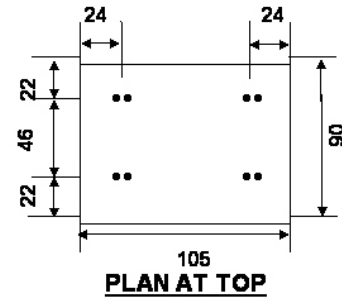
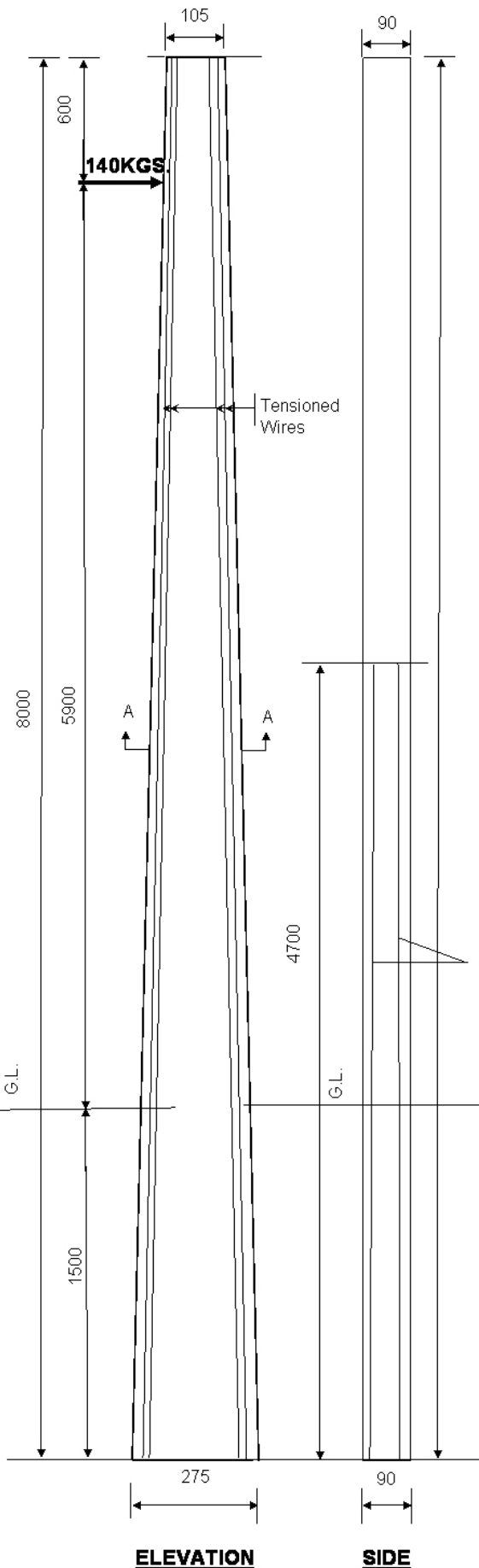


REINFORCEMENT DETAILS OF 8.0M/140KG PRESTRESSED CEMENT CONCRETE POLES (FACTOR OF SAFETY = 2.5)



Location of holes as per REC Standards
 • Denotes Tensioned Wire
 x Denotes Untensioned Wire

TECH. GUARANTEE PARTICULARS OF 8.0mtr/140KG WORKING LOAD SECTION:	
A).TOP	105 X 90 MM
B).BOTTOM	275 X 90 MM
QUANTITY OF CONCRETE	0.137M ³
CONCRETE GRADE	M-420
OVERALL LENGTH SUPPORT	8.0 MTR
PLANTING DEPTH	1.5 MTR
DIA METER OF PRESTRESSING WIRE	4 MM
NUMBER OF TENSIONED WIRES	8 NOS
NUMBER OF UNTENSIONED WIRES	2 NOS
PRE-TENSIONED APPLIED TO EACH 4MM WIRE	1760KGS
MINIMUM CUBE STRENGTH OF CONCRETE AT 28 DAYS	420 KG/CM ²
CLEAR COVER	20 MM
FACTOR OF SAFETY	2.5
WORKING LOAD	140 KGS
ULTIMATE LOAD	350 KGS
WEIGHT OF POLE (THEORITICAL)	330 KGS
LOAD APPLICATION AT A POINT FROM THE TOP	600 MM
UNTIMATE TENSION STRENGTH FOR 4MM WIRE	17500KG/CM ²
ALL DIMENSIONS ARE IN mm	NOT TO SCALE